



SOUL ESTATES

SALES & LETTINGS

TO LET - 2 BEDROOM HOUSE

Nineveh Avenue, Handsworth, B21 0SZ

£900 PCM

Soul Estates are proud to present this well-presented 2 bedroom terraced house To Let. This perfect family home is situated in a very popular area of Handsworth, Birmingham. Situated near Birmingham City Hospital with good schools, local amenities, and transport links to Soho Road and Birmingham City Centre.

The property offers an entrance leading into the spacious first reception, second reception and fitted kitchen. Kitchen with a range of wall and base units to match, splashback tiling, gas hob with an integrated gas oven. Stairs leading to the first-floor landing which leads off to two double bedrooms and the family bathroom. The property also benefits gas central heating and double glazing, low maintenance front and rear garden with ample on-street parking.

✓ **2 BEDROOM TERRACED HOUSE TO LET**

✓ **CLOSE TO LOCAL AMENITIES**

✓ **2 SEPARATE RECEPTION ROOMS**

✓ **IDEAL LOCATION**









SOUL ESTATES

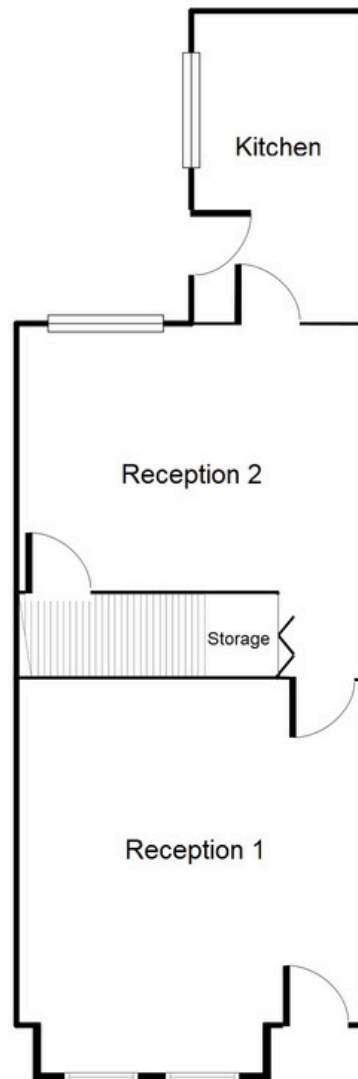
SALES & LETTINGS

TO LET - 2 BEDROOM HOUSE

Nineveh Avenue, Handsworth, B21 0SZ

£900 PCM

Ground Floor



This floorplan is just an example, this is not to scale.
Please see description for exact room sizes.
(c) Soul Estates

Reception Room 1

13' 4" x 11' 4" (4.06m x 3.45m)

Reception Room 2

11' 10" x 11' 4" (3.60m x 3.45m)

Kitchen

10' 8" x 6' 2" (3.25m x 1.88m)



SOUL ESTATES

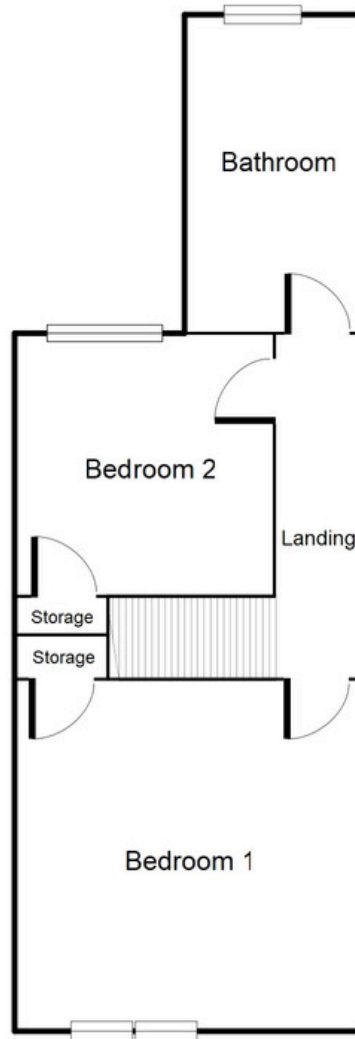
SALES & LETTINGS

TO LET - 2 BEDROOM HOUSE

Nineveh Avenue, Handsworth, B21 0SZ

£900 PCM

First Floor



This floorplan is just an example, this is not to scale.
Please see description for exact room sizes.
(c) Soul Estates

First Floor Landing

14' 11" x 2' 4" (4.54m x 0.71m)

Bedroom 1

10' 10" x 11' 4" (3.30m x 3.45m)

Bedroom 2

11' 10" x 8' 7" (3.60m x 2.61m)

Bathroom

10' 8" x 6' 2" (3.25m x 1.88m)